

Paravel Systems

APPLICATION NOTE 007

Installing and Configuring the LiveWire Audio-IP Driver on EL6

SCOPE

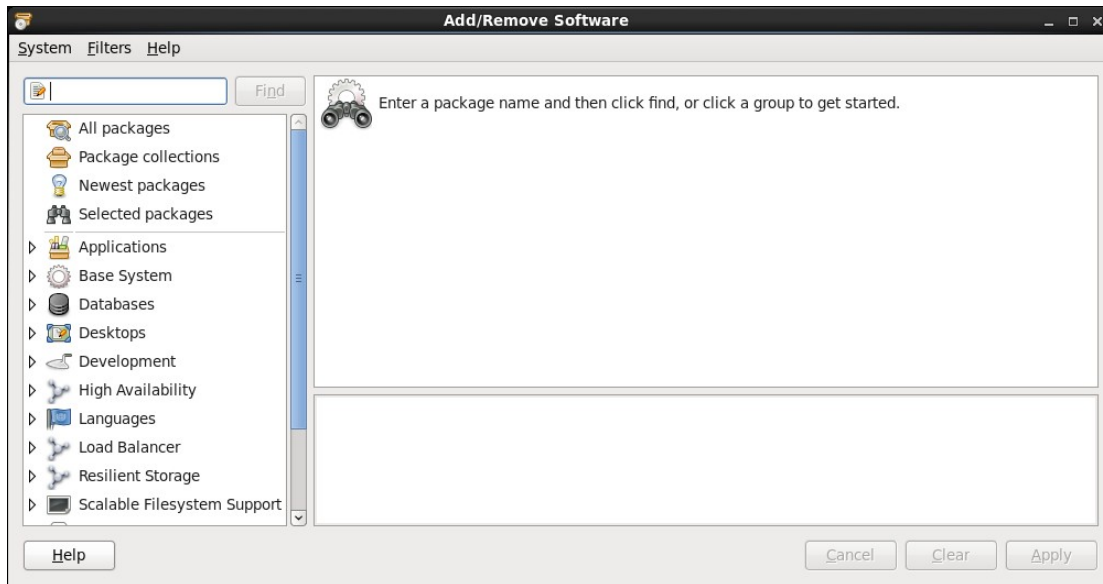
This application note details the procedures for installing and configuring the LiveWire Audio-IP driver on RedHat Enterprise Linux [EL6] derived distributions running on Intel 32 bit [i386] and 64 bit [x86_64] architectures.

PREREQUISITES

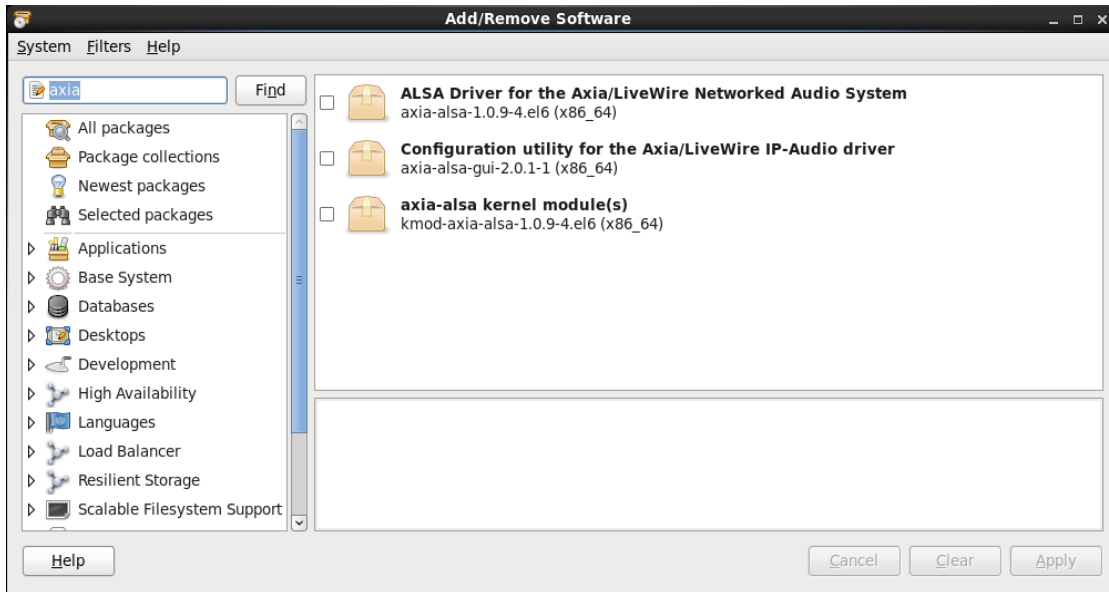
- 1) A system running one of the following Linux distributions:
 1. CentOS 6
 2. Paravel Systems Broadcast Appliance 2
 3. RedHat Enterprise Linux 6
 4. Scientific Linux 6
- 2) An installation serial number from Paravel Systems for either the single channel or multichannel driver
- 3) Internet access

PROCEDURE

- 1) Configure the Software Repository [users of Broadcast Appliance 2 can skip to step 2), as these files are already included.]
 1. Download <http://download.paravelsystems.com/CentOS/6com/RPM-GPG-KEY-Paravel-Broadcast> to the '/etc/pki/rpm-gpg/' directory.
 2. Download <http://download.paravelsystems.com/CentOS/6com/Paravel-Commercial.repo> to the '/etc/yum.repos.d/' directory.
- 2) In the System menu, click **Administration**, then **Add/Remove Software**.



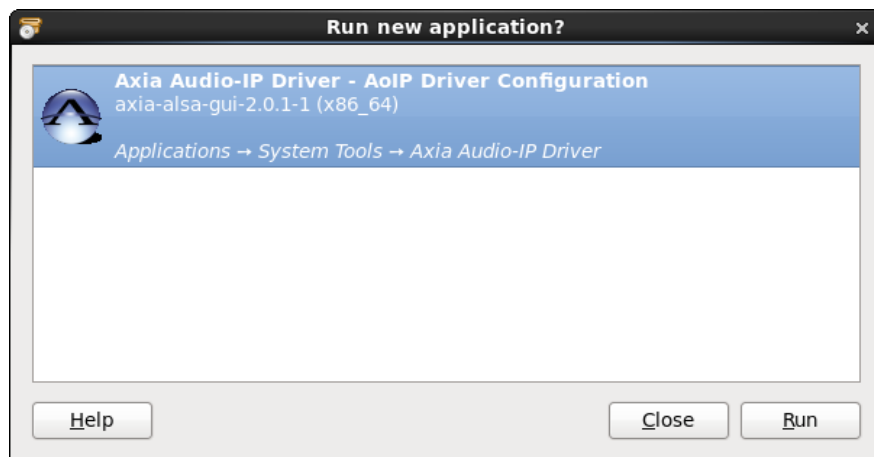
- 3) In the search control at the upper left-hand corner, enter 'axia' and then click the **Find** button.



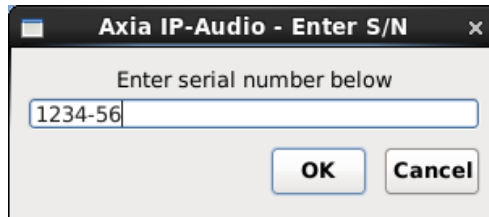
- 4) Check the three items that appear for the search results and then click the **Apply** button.



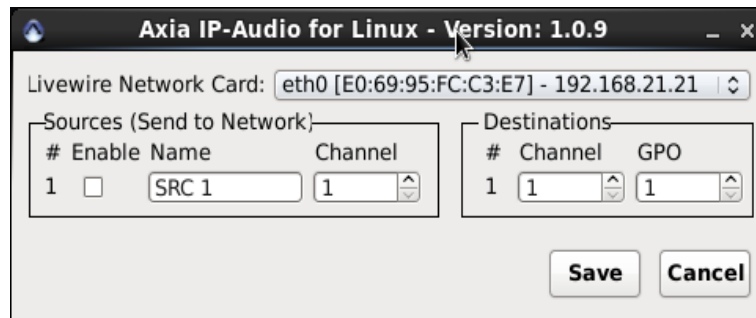
- 5) Enter the root (administrator) password when prompted, following which the system will download and install the software (this may take several minutes).



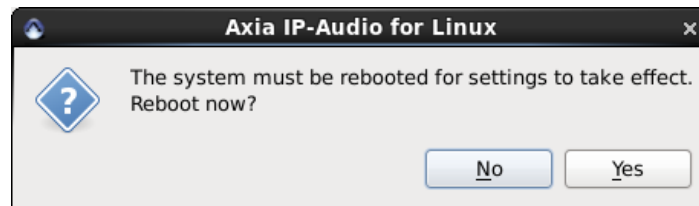
- 6) When the 'Run new application?' window appears, click the **Run** button. Enter the root password when prompted.



- 7) Enter the product serial number and then press the **OK** button. To obtain a serial number, contact Paravel Systems at 'sales@paravelsystems.com'. (Depending upon the specific product purchased, the appearance of the configuration dialog may vary from what is pictured here).



- 8) Select the network interface that is connected to the Livewire network from the **Livewire Network Card** dropdown list.
- 9) Configure the Livewire sources and destinations as desired. A full description of these concepts is beyond the scope of this document, but can be found in the *Introduction to Livewire Systems Primer*, available at <http://axiaaudio.com/manuals>.
- 10) Click the **Save** button to save the configuration and close the dialog. Depending upon the options selected, the system may require a reboot at this point.



- 11) The driver is now ready for service. To access the driver configuration again, select the **Applications** menu, then click **System Tools** and then **Axia Audio-IP Driver**.

REVISION HISTORY

Wed 19 Jun 2013 – Fred Gleason <fredg@paravelsystems.com>

- Initial document creation.